

Instruction Manual



NRU-DT350B

Note: Operator must read and understand this Instruction Manual before using.

Preface

1. In order to make the users quickly understand the structure and performance features of this product, so as to carry out regular maintenance as well as correct regulation of vehicle, our factory hereby compile this operation instruction sheet as well as spare parts table for users' reference.
2. Read the instruction sheet and parts table carefully before using and make clear the structural performance, Maintenance as well as attentions.
3. The personnel without license cannot operate the drum handler. Only those qualified personnel with professional training as well as approved by relevant departments and familiar with the structural performance can independently operate the vehicle.
4. The work site of drum handler shall be flat, solid place with enough loading capacity.
5. Our company will not hold any responsibility for the modification of drum handler by users without the prior approval of our company.

1. Brief Introduction

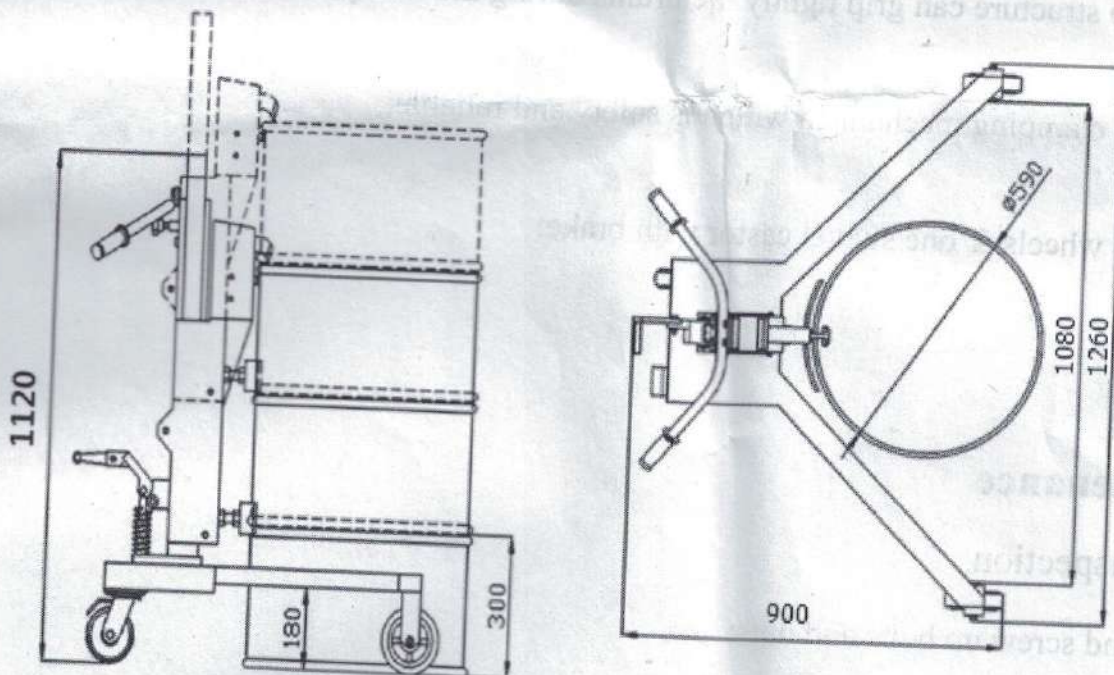
As a popularly used Pallet loading barrel movers, our V-shaped Drum handler, drum handling equipment, Drum Transporters / Drum Palletizers / Drum Movers is used to transport drums, and move 350kg rimmed steel and plastic drums on and off pallets up to 300mm high. This equipment is commonly used to lift and transport and place drums on and off pallets, spill containment pallets in upright position, and drum dollies. Drum handlers are usually made of heavy duty metals with smooth coating. The V-Shaped base of these drum movers allows you to raise and place a drum at the corner of pallets.

2. Technical Data

Model		NRU-DT350B
Load capacity	kg	350
Wheel Dimension (Front / Rear)	mm	Ø150*50 / Ø125*50
Lifting Height	mm	300
Inner width of supporting legs	mm	1080

3. Main Technical Performance and Parameter

3.1 Drawing



3.2 Feature of Hydraulic Drum handler

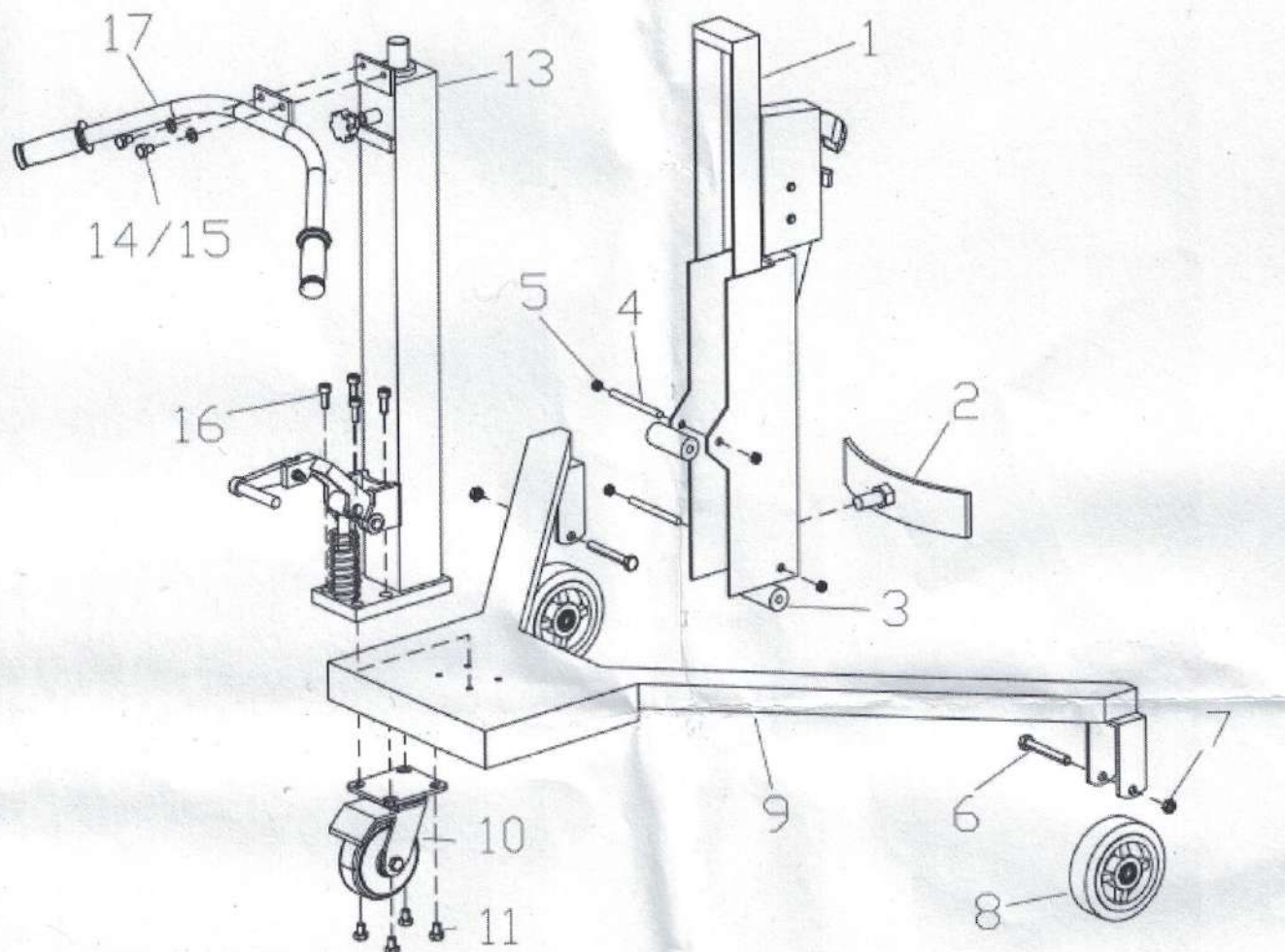
1. V-shaped base of the drum mover will straddle a pallet up to 1000mm wide;
2. Pallet loading barrel movers with 350kg capacity;
3. Transport drums, and move rimmed drums on and off pallets up to 300mm high;
4. V-Shaped base allows you to raise and place a drum at the corner of pallets;
5. Ergonomic for lifting, transporting and placing steel & plastic rimmed drums;
6. Eagle-grip structure can grip tightly the drums during the transportation;
7. Exclusive clamping mechanism which is safety and reliable;
8. Two rigid wheels & one swivel castor with brake;

4. Maintenance

Weekly inspection

1. Check and screw up bolts and nuts;
2. Add butter to the bearing every week regularly;
3. Change oil every a half year;

5. Parts List



Parts NO.	Parts Name	QTY	Parts NO.	Parts Name	QTY
1	Metal case assy'	1	9	Pedestal	1
2	Dam-board	1	10	Universal wheel with brake	1
3	Roller	2	11	Bolt M10X20	4
4	Pin	2	13	Oil Cylinder Assy'	1
5	Locknut M10	4	14	Bolt M10X20	2
6	Bolt M12X90	2	15	Flat washer 10mm	2
7	Locknut M12	2	16	hexagon socket screw M10X30	4
8	Caster	2	17	Handle assy'	1